

Kirkpatrick & Company, Inc.  
STOCK SELECTION SERVICE

-----  
VALUE LIST  
-----

For Week Ending 7/17/2009

| Security       | PRICE  | RELATIVES |      |       | ADDED |       |      |       |     |
|----------------|--------|-----------|------|-------|-------|-------|------|-------|-----|
| EX Description | SYMBOL | Close     | PCNT | PRICE | EPS   | P/SLS | DATE | PRICE | G/L |

\*\*NEWLY SELECTED STOCKS

|                          |      |             |        |       |       |       |  |  |  |
|--------------------------|------|-------------|--------|-------|-------|-------|--|--|--|
| BT Group ADR             | BT   | 18.10+11.1% | 90+ 7  | 95    | 18- 3 |       |  |  |  |
| SXC Health Solutions Cor | SXCI | 28.68+ 6.7% | 90- 1  | 91    | 30- 1 |       |  |  |  |
| GROUP AVERAGES           |      | NUM= 2      | + 8.9% | 90+ 3 | 93 0  | 24- 2 |  |  |  |

\*\*VALUE LIST-COMPLETE

|                             |      |             |        |       |       |      |           |               |
|-----------------------------|------|-------------|--------|-------|-------|------|-----------|---------------|
| Atlas Air Worldwide         | AAWW | 23.01+ 7.5% | 56+ 2  | 73- 1 | 12    |      | 5/15/2009 | 23.74 - 3.1%  |
| BT Group ADR                | BT   | 18.10+11.1% | 90+ 7  | 95    | 18- 3 |      | 7/17/2009 | 18.10 0.0%    |
| XX Calumet Specialty Produc | CLMT | 15.49- 3.2% | 85-10  | 96    | 6- 2  |      | 7/10/2009 | 16.00 - 3.2%  |
| CarMax Inc.                 | KMX  | 15.06+11.1% | 90+ 3  | 94    | 23+ 1 |      | 4/10/2009 | 12.23 + 23.1% |
| Central Garden & Pet        | CENT | 12.20+20.7% | 95+10  | 94    | 24+ 3 |      | 6/ 5/2009 | 10.77 + 13.3% |
| Inergy Holdings LP          | NRGP | 41.25+ 1.6% | 79-11  | 94    | 21- 1 |      | 2/20/2009 | 27.50 + 50.0% |
| Jo-Ann Stores               | JAS  | 22.01+11.7% | 88+ 6  | 91    | 10+ 1 |      | 6/ 5/2009 | 22.94 - 4.1%  |
| XX Sears Holdings           | SHLD | 62.72+ 9.3% | 75+ 5  | 95    | 4+ 1  |      | 6/ 5/2009 | 69.47 - 9.7%  |
| SXC Health Solutions Cor    | SXCI | 28.68+ 6.7% | 90- 1  | 91    | 30- 1 |      | 7/17/2009 | 28.68 0.0%    |
| Universal Forest            | UFPI | 41.76+28.6% | 96+17  | 96    | 16+ 4 |      | 4/ 3/2009 | 29.83 + 40.0% |
| Willbros Group Inc          | WG   | 13.07+ 9.9% | 72+ 5  | 96    | 9     |      | 6/ 5/2009 | 15.96 - 18.1% |
| GROUP AVERAGES              |      | NUM= 11     | +10.4% | 83+ 3 | 92 0  | 15 0 |           |               |
| REPORT AVERAGES             |      | NUM= 13     | +10.2% | 84+ 3 | 92 0  | 17 0 |           |               |

BT has been unaffected by the general market decline in the past month and this week broke above its previous high since the March low. Its relative price strength percentile advanced to 90, and its relative earnings growth has been strong all along.



SXCI, likewise, has behaved very well during the recent market decline and is now trading at a new annual high. Its increase market capitalization along with this price strength and high earnings growth placed it on the Value list this week.

Kirkpatrick & Company, Inc.  
STOCK SELECTION SERVICE

-----  
GROWTH LIST  
-----

For Week Ending 7/17/2009

| EX                     | Security Description     | SYMBOL  | PRICE   |        | RELATIVES |       |       | CHART | ADDED      |        |         |
|------------------------|--------------------------|---------|---------|--------|-----------|-------|-------|-------|------------|--------|---------|
|                        |                          |         | Close   | PCNT   | PRICE     | EPS   | P/SLS |       | DATE       | PRICE  | G/L     |
| ==                     | =====                    | =====   | =====   | =====  | =====     | ===== | ===== | ===== | =====      | =====  |         |
| **GROWTH LIST-COMPLETE |                          |         |         |        |           |       |       |       |            |        |         |
| XX                     | Alexanders Inc.          | ALX     | 261.20+ | 0.3%   | 80-11     | 94    | 94    | UP    | 6/26/2009  | 281.20 | - 7.1%  |
|                        | Alpha Natural Res.       | ANR     | 28.61+  | 18.6%  | 89+19     | 90    | 41+ 5 | FLAT  | 5/22/2009  | 25.85  | + 10.7% |
| XX                     | Amer. Med. Sys.          | AMMD    | 16.37+  | 7.6%   | 87        | 91    | 77+ 1 | UP    | 5/15/2009  | 14.66  | + 11.7% |
|                        | CarMax Inc.              | KMX     | 15.06+  | 11.1%  | 90+ 3     | 94    | 23+ 1 | UP    | 6/19/2009  | 15.31  | - 1.6%  |
| XX                     | Discovery Communications | DISCA   | 23.35+  | 4.0%   | 87- 5     | 90    | 71    | UP    | 5/22/2009  | 21.83  | + 7.0%  |
|                        | HEALTHSOUTH Corp.        | HLS     | 14.09+  | 7.8%   | 92        | 94    | 34+ 1 | UP    | 6/26/2009  | 14.14  | - 0.4%  |
| XX                     | Lancaster Colony         | LANC    | 45.46+  | 8.1%   | 42+ 7     | 92    | 56    | UP    | 2/13/2009  | 41.86  | + 8.6%  |
| XX                     | Longtop Fin'l Technologi | LFT     | 26.06+  | 15.0%  | 79+18     | 76-22 | 96- 1 | UP    | 3/20/2009  | 18.83  | + 38.4% |
| XX                     | Sears Holdings           | SHLD    | 62.72+  | 9.3%   | 75+ 5     | 95    | 4+ 1  | UP    | 6/ 5/2009  | 69.47  | - 9.7%  |
| XX                     | Starent Networks         | STAR    | 25.78+  | 12.4%  | 95+ 1     | 75    | 94    | UP    | 4/24/2009  | 18.78  | + 37.3% |
| XX                     | Tessera Technologies     | TSRA    | 28.79+  | 15.0%  | 98        | 98    | 90+ 1 | UP    | 6/ 5/2009  | 27.03  | + 6.5%  |
|                        | Walter Energy            | WLT     | 43.00+  | 19.3%  | 98+ 1     | 92+ 1 | 63+ 5 | UP    | 5/ 8/2009  | 32.43  | + 32.6% |
| XX                     | World Fuel Services      | INT     | 40.43+  | 8.1%   | 58+ 5     | 82    | 0     | UP    | 11/21/2008 | 30.49  | + 32.6% |
|                        | GROUP AVERAGES           | NUM= 13 |         | +10.5% | 82+ 3     | 89- 1 | 61+ 1 |       |            |        |         |
|                        | REPORT AVERAGES          | NUM= 13 |         | +10.5% | 82+ 3     | 89- 1 | 61+ 1 |       |            |        |         |

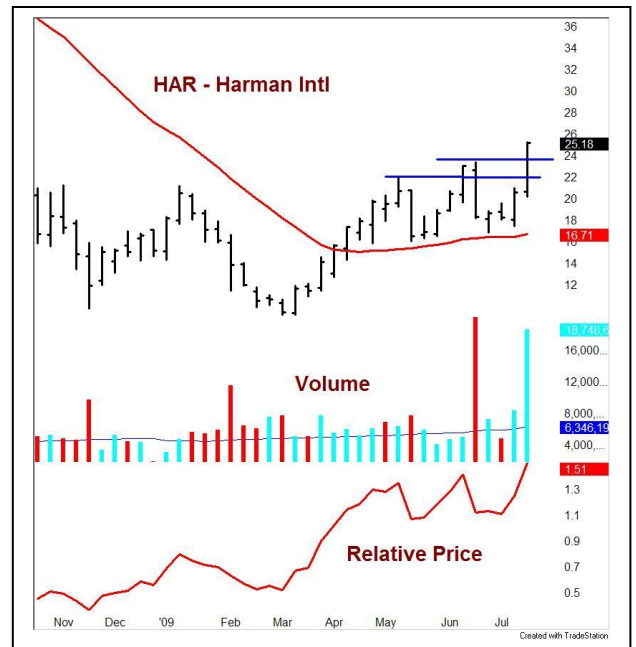
Kirkpatrick & Company, Inc.  
STOCK SELECTION SERVICE

BARGAIN LIST

For Week Ending 7/17/2009

| Security Description      | SYMBOL | PRICE Close | PCNT   | RELATIVES PRICE | P/SLS | DATE      | ADDED PRICE | G/L     |
|---------------------------|--------|-------------|--------|-----------------|-------|-----------|-------------|---------|
| **NEWLY SELECTED STOCKS   |        |             |        |                 |       |           |             |         |
| Harman Int'l              | HAR    | 25.18       | +22.4% | 97+             | 4     |           |             | 21+ 4   |
| **BARGAIN LIST - COMPLETE |        |             |        |                 |       |           |             |         |
| AES Corp.                 | AES    | 11.93       | +6.7%  | 96-             | 1     | 7/10/2009 | 11.18       | + 6.7%  |
| Aracruz Celulose S A ADR  | ARA    | 16.46       | +12.8% | 96+             | 1     | 5/ 8/2009 | 16.89       | - 2.5%  |
| BE Aerospace              | BEAV   | 14.26       | +19.2% | 82+             | 27    | 6/ 5/2009 | 16.81       | - 15.2% |
| Celanese Corp             | CE     | 22.64       | + 8.7% | 93-             | 1     | 4/10/2009 | 17.59       | + 28.7% |
| CommScope                 | CTV    | 26.11       | + 8.1% | 94-             | 1     | 4/24/2009 | 20.60       | + 26.7% |
| Foundation Coal Hldgs.    | FCL    | 30.10       | +16.6% | 96+             | 4     | 5/15/2009 | 26.88       | + 12.0% |
| Harman Int'l              | HAR    | 25.18       | +22.4% | 97+             | 4     | 7/17/2009 | 25.18       | - 0.0%  |
| Markwest Energy Partners  | MWE    | 21.54       | +12.5% | 97              |       | 6/12/2009 | 19.35       | + 11.3% |
| Massey Energy             | MEE    | 20.95       | +22.5% | 89+             | 28    | 5/29/2009 | 22.89       | - 8.5%  |
| McDermott Int'l           | MDR    | 18.29       | + 8.2% | 58+             | 1     | 5/22/2009 | 19.71       | - 7.2%  |
| Morgan Stanley            | MS     | 27.99       | + 7.9% | 60              |       | 3/13/2009 | 25.43       | + 10.1% |
| NBTY Inc.                 | NTY    | 30.30       | + 5.1% | 96-             | 1     | 5/ 1/2009 | 26.19       | + 15.7% |
| NewMarket Corp.           | NEU    | 76.86       | +15.2% | 96+             | 2     | 5/29/2009 | 72.57       | + 5.9%  |
| Penney (J.C.)             | JCP    | 28.70       | + 9.2% | 83+             | 3     | 5/ 1/2009 | 31.00       | - 7.4%  |
| Petro-Canada              | PCZ    | 38.77       | +14.5% | 81+             | 13    | 5/ 8/2009 | 40.59       | - 4.5%  |
| Royal Caribbean Cruises   | RCL    | 13.69       | + 9.8% | 81+             | 4     | 4/24/2009 | 14.46       | - 5.3%  |
| Western Digital           | WDC    | 29.24       | +15.2% | 95+             | 3     | 4/ 3/2009 | 21.30       | + 37.3% |
| Whole Foods Market        | WFMI   | 21.87       | +13.6% | 89+             | 7     | 5/ 1/2009 | 20.93       | + 4.5%  |
| GROUP AVERAGES            | NUM=   | 18          | +12.6% | 87+             | 5     |           |             | 30+ 1   |
| REPORT AVERAGES           | NUM=   | 19          | +13.1% | 88+             | 5     |           |             | 30+ 1   |

HAR, as the chart shows, broke above its earlier two important highs on tremendous volume. Its action during the recent market decline was strong, and with the strong market this past week, it rose in relative price strength percentile to 97.



## Legend for Stock Lists

- EX = If an “XX” is present, it means that the stock has met the sell trigger under the new rules for deleting stocks from the Bargain List.
- Security Description = Name of underlying company.
- SYMBOL = Exchange symbol for stock.
- PRICE = Includes the Close and the percentage change (PCNT) over the previous week.
- RELATIVES = Each column includes the percentile and its change from the previous week. The relative percentile columns are different for each list and are listed in the table below:
- ADDED = Data pertaining to when and at what price the stock was added to the list. “G/L” is the gain or loss in the stock as of the report date (upper right corner)

## List Rules

### Addition to list:

Stock is added to a list when all of the factors below have been met:

|                            | <b>Value</b>     | <b>Growth</b>         | <b>Bargain</b>     |
|----------------------------|------------------|-----------------------|--------------------|
| <b>Relative Price Pctl</b> | => 90            | => 90                 | => 97              |
| <b>Relative EPS Pctl</b>   | => 90            | => 90                 |                    |
| <b>Relative P/S Pctl</b>   | =< 30            |                       | => 17 and<br>=< 42 |
| <b>Chart</b>               |                  | Above two prior highs |                    |
| <b>Market Cap</b>          | => \$500 million | => \$1 billion        | => \$1 billion     |
| <b>Last Price</b>          | => \$10          | => \$10               | => \$10            |

### Deletion from list:

Stock is deleted from a list when any of the factors below are met:

|                            | <b>Value</b> | <b>Growth</b>        | <b>Bargain</b>   |
|----------------------------|--------------|----------------------|------------------|
| <b>Relative Price Pctl</b> | =< 30        | =< 30                | =< 52            |
| <b>Relative EPS Pctl</b>   | < 50         | < 70                 |                  |
| <b>Relative P/S Pctl</b>   |              |                      | =< 7 or<br>=> 67 |
| <b>Chart</b>               |              | Below two prior lows |                  |

Note: Relative percentiles are between 99 and 0, with 99 the highest.